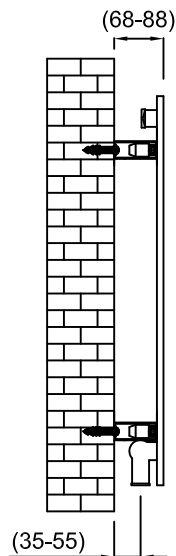
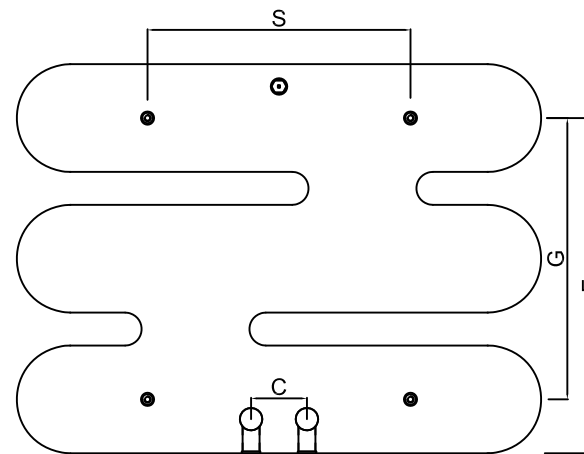


**Front View
(Fog 600*800)**

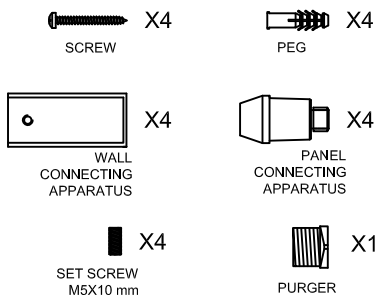


Side View

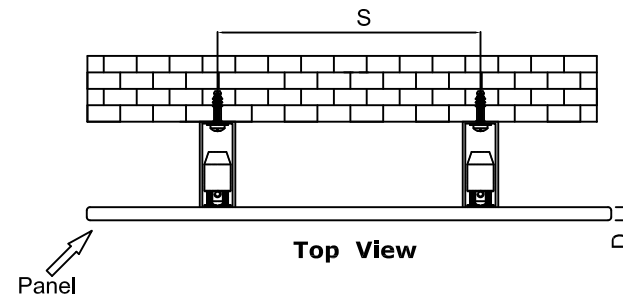


Back View

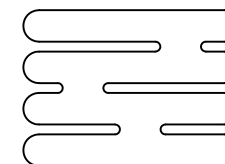
SUPPLIED INSTALLATION ACCESSORIES



- Horizontal Mounting
- Optional Ral Color Selection
- Max Working Pressure: 6 Bar
- Plumbing Inlet/Outlet: 1/2"
- All Dimensions are in mm



Top View



**Front View
(Fog 800*1100)**

Product Name	Product Code	Height	Width	Thickness	Plumbing Axes Center to Center	Hanger Axes Horizontal	Hanger Axes Vertical	Hanger to Bottom of the Product	Number of Legs
		H	W	D	C	S	G	F	-
		mm	mm	mm	mm	mm	mm	mm	mm
Fog 600*800	115-060080	800	592	7	50	400	428	510	3
Fog 800*1100	115-080110	1100	790	7	50	700	630	710	4