

eco texture linear tileable-reversible grate

technical data sheet

product

Channel kit with linear grate (6.1 cm wide) and waterproof membrane **imperband eco** heat sealed to the drain.

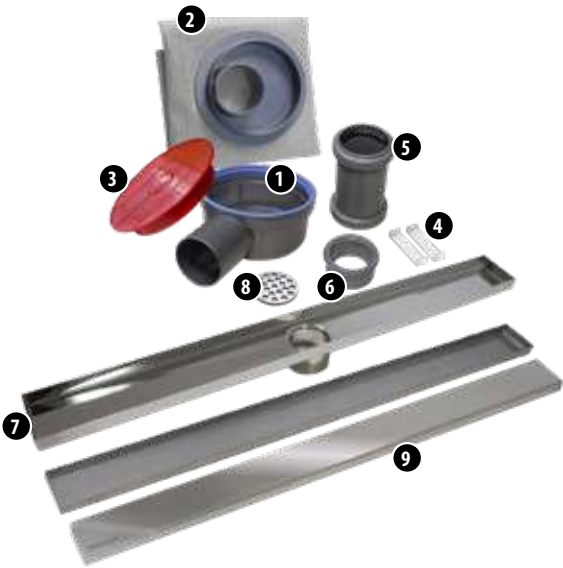
description

Kit de sumidero y rejilla lineal **modelos: 60 cm, 80 cm, 120 cm, 150 cm y 180 cm** de largo por 6,1 cm de ancho, que ofrece dos tipos de acabado: revestible en cerámica por un lado y acabado acero por el otro.

For more information about membrane, see **imperband eco** technical data sheet.

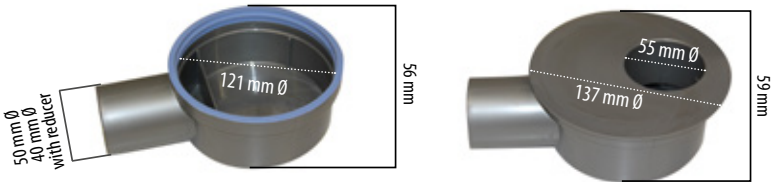
components

- 1. Drain
- 2. **imperband eco** membrane
heat-sealed to the top base
- 3. Protective cover
- 4. bindings for the grate
- 5. Adapter
- 6. Reducer 50/40
- 7. Channel
- 8. Hair catcher
- 9. Stainless steel grate



drain

Drain kit with water trap (convertible in untrapped), for tillable showers that includes horizontal output (50-40 mm), and EVAC waterproofing 25 x 25 cm membrane **imperband eco** heat-sealed to the top cover of the drain, to ensure watertightness at the most critical point.



bonde	value	unity
Height	60	mm
Outlet		Horizontal
Output diameter	40/50H	mm
Flow rate	0,60	l/s
Effects of chemical products		
Stable against the products normally used with ceramic coatings, in cleaning and maintenance.		
Colour	Grey	
Composition of drain waste and top ring	ABS	
Membrane/drain union	Heat-sealed	

eco texture linear tileable-reversible grate

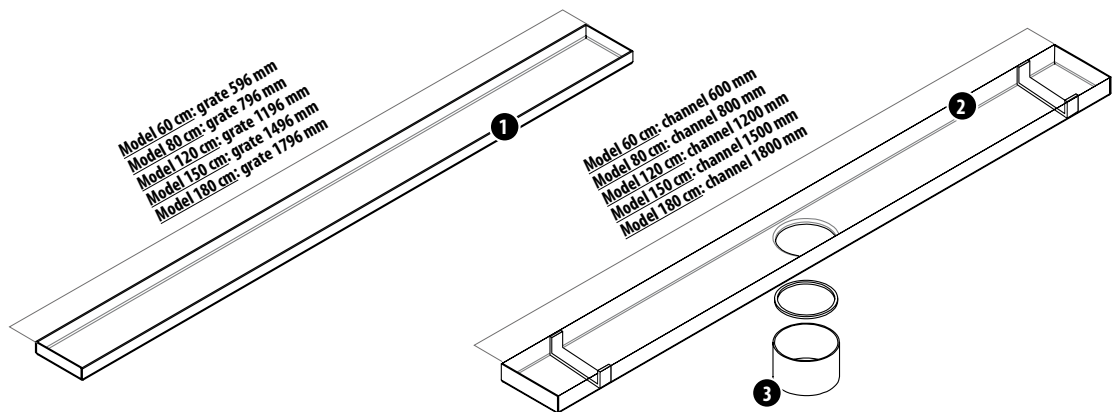
technical data sheet



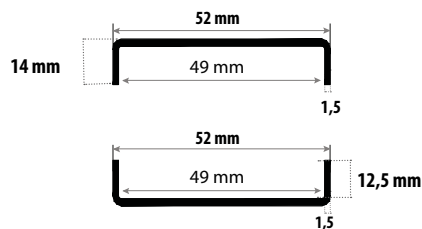
grate	unity	value
Dimensions	mm	See at the bottom of the page
Effects of chemical products	Stable against the products normally used with ceramic coatings, in cleaning and maintenance.	
Composition	Stainless steel grate AISI 304	
Colour	Grey	

dimensions

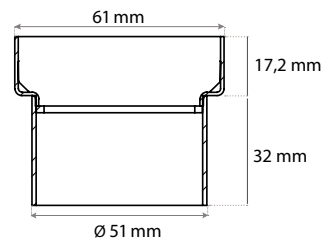
Outer dimensions



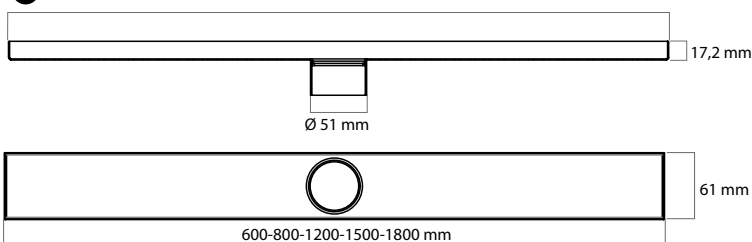
1 Grate
(Sectional view)



3 Base canal
(Sectional view)



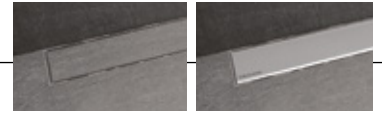
2 Channel



eco texture linear tileable-reversible grate

technical data sheet

butech
PORCELANOSA Grupo



1. Before connecting the drain to the drain pipe, check if the installation requires a trap. If not, remove it from the drain piece



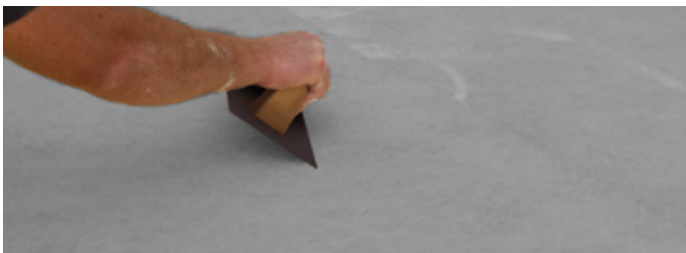
2. Connect the drain outlet to the drain pipe. Pour water through the drain and check that it works correctly. Protect the drain with the cover and create slopes of 2% towards the drain.



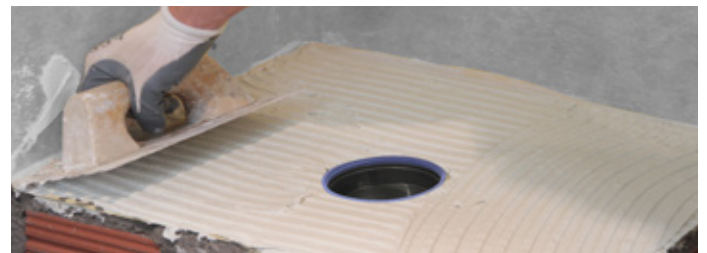
3. Once the substrate is dry, choose a C2 cementitious adhesive according to EN 12004 and spread it with a notched trowel of 4 - 6 mm.



4. Remove the protective cover from the drain and connect it to the waterproof membrane with the thermowelded union ring.



5. Unroll the waterproof membrane and press it onto the still fresh adhesive without forming air pockets. Extend the waterproofing with imperband eco, both on the floor and on the shower wall, always overlapping each sheet by at least 10 cm.



6. Spread a layer of C2 cementitious adhesive according to EN 12004 using a notched trowel to attach the drain channel and the chosen covering for the shower.



7. Check that the covering of the shower tray is at the same level as the drain, especially when the drain is covered with ceramic, mosaic, or natural stone.



8. Place white fixings as shown in the image.



9. After covering the shower tray, seal the joint between the frame and the covering with elastic sealant P-404 and install the decorative grate. Finally, seal the installation joints with a moisture-resistant material.

Grate supplied with protective film. **DO NOT** remove until after construction cleaning.

eco texture linear tileable-reversible grate

technical data sheet

butech
PORCELANOSA Grupo



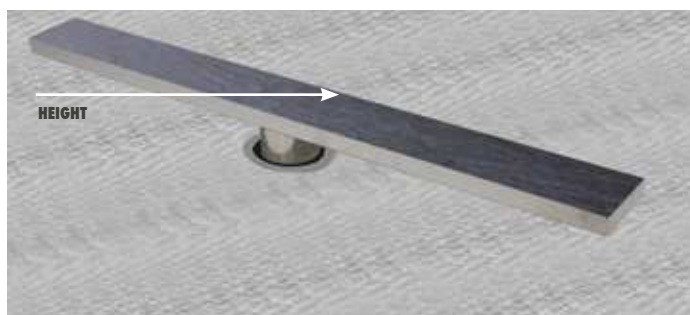
TILEABLE SIDE



1. Place the linear drain's cradle over the drain and adhere it to the waterproof membrane with tile adhesive.



2. Join the strip of covering over the grate. Use a suitable adhesive for this purpose



3. We insert the grate with the piece into the cradle since the height of the shower floor needs to be measured from the height of the already covered grate.



4. Proceed with tiling the floor and walls, starting from the already covered grate

References

SAP	Product description	Packaging
100330765	KIT REJ LINEAL ECO TEXTURE-REVS 59,6X5,2	1 ut / box
100330766	KIT REJ LINEAL ECO TEXTURE-REVS 80X5,2	1 ut / box
100333806	KIT REJ LINEAL ECO TEXTURE-REVS 120X5,2	1 ut / box
100333807	KIT REJ LINEAL ECO TEXTURE-REVS 150X5,2	1 ut / box
100333778	REJILLA LINEAL REVEST-REVERS N 180X5,2	1 ut / box

butech building technology, S.A.U.

Latest update: 06/05/2024

Carretera Vila-real - Puebla de Arenoso (cv-20) km 2,5 - 12540 Vila-real - Castellón - España.

Apartado de correos: 297 - Teléfono (+34) 964 53 62 00 - Fax (+34) 964 53 00 34 - butech@butech.es - www.butech.net

4/4